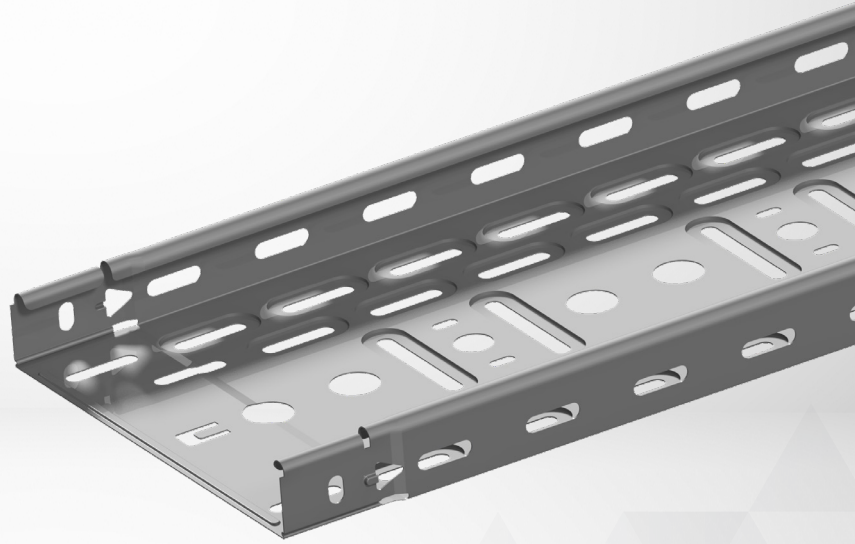




# KBSCCL35

The highly requested new size of the #1 cable tray is now available, offering improved flexibility and performance for all installations.



The revolutionary clickable cable tray. Nuts, bolts, joining plates or clips are optional. The cable trays automatically click when they are interlocked. This system will help you save time and money in a heartbeat. The deep perforations provide extra load capacity and less deflection, but also ensure better stability.



## KBSCCL Features:

- **Fast** - Just click and ready for the next joint. Immediate alignment at the same time.
- **Strong** - As strong as a bolted joint.
- **Reliable** - Maximum load with snap-fit joint. Multiple jointing options available.
- **Cost-effective** - Working faster results in immediate time and cost savings.
- **High standard** - Wide and complete range of accessories available.
- **Straight** - The autoalignment, inherent to the design, guarantees a straight installation.

“Developed in direct response to market demand, this product is **engineered for installations where space is limited and heavy-duty capacity isn’t required**. Its streamlined design makes it the ideal solution for compact environments and applications carrying lighter cable loads—delivering efficiency without compromise.”



KBSCCL35 is on average 15% lighter than KBSCCL60.



KBSCCL35 is on average 25% more cost-effective than KBSCCL60 due to reduced material requirements.



For more info visit [vergokan.com](http://vergokan.com)

©2026 Atkore All rights reserved.

| Sendzimir       | ↕ mm | ↔ mm | →  ← mm | ↵ mm | kg / m | 📦  | Unit |
|-----------------|------|------|---------|------|--------|----|------|
| KBSCl35.075.075 | 35   | 75   | 0,75    | 3000 | 0,790  | 60 | m    |
| KBSCl35.100.075 | 35   | 100  | 0,75    | 3000 | 0,960  | 60 | m    |
| KBSCl35.150.075 | 35   | 150  | 0,75    | 3000 | 1,220  | 60 | m    |
| KBSCl35.200.075 | 35   | 200  | 0,75    | 3000 | 1,480  | 60 | m    |
| KBSCl35.300.075 | 35   | 300  | 0,75    | 3000 | 1,990  | 60 | m    |
| KBSCl35.400.075 | 35   | 400  | 0,75    | 3000 | 2,520  | 60 | m    |

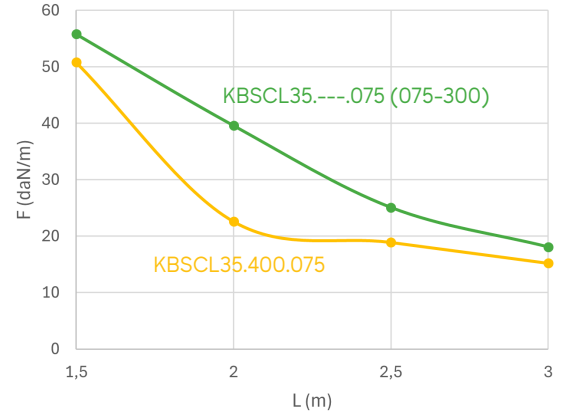
## Load Diagram

This diagram illustrates the permissible uniformly distributed loads applied to multiple supports, tested in compliance with IEC 61537.

F = max. admissible load (daN/m)

L = support distance (m)

Max. deflection (m) = L/100

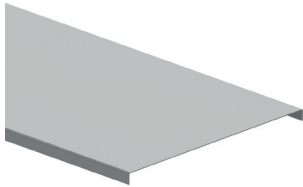


## Accessories

KBSCl35 comes with every accessory you need – from covers to hinged double joiners. Engineered for seamless installation and total compatibility.

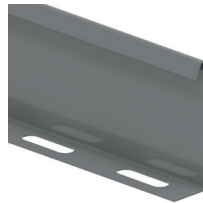
### D

Universal cover



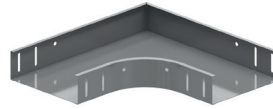
### SLOS

Bolt-in partition



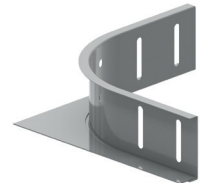
### B90

Horizontal bend 90°



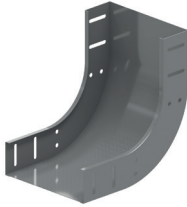
### AZH

Universal coupling 90°



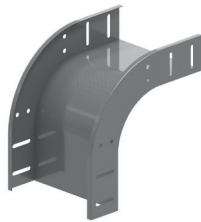
### SB90

Rising elbow 90°



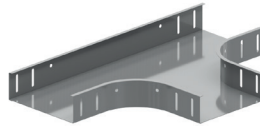
### VB90

Low elbow 90°



### T

Horizontal T-piece



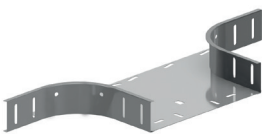
### KR

Cross-over



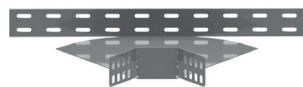
### AS

Horizontal adapter 90°



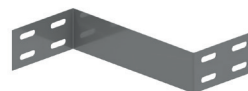
### VH

Adjustable Corner



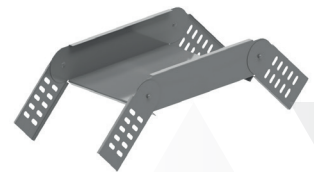
### VS

Reducing plate



### SDB

Hinged joiner double



For more info visit [vergokan.com](http://vergokan.com)

©2026 Atkore All rights reserved.